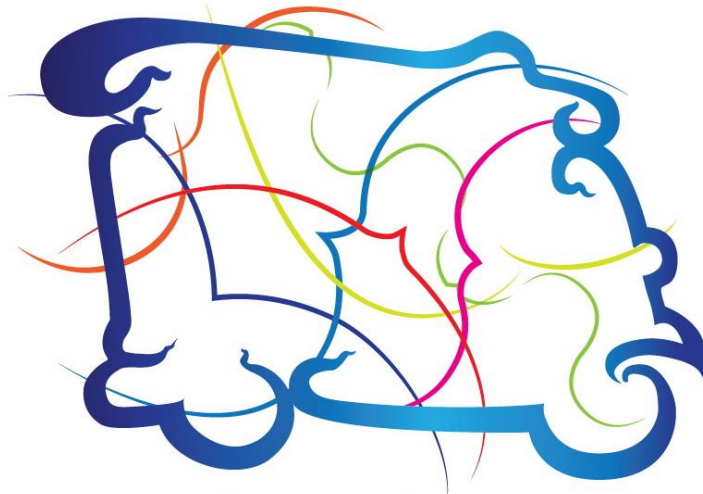




**Challenger Series in Figure Skating 2018/19**



**ASIAN OPEN  
FIGURE SKATING TROPHY  
BANGKOK THAILAND  
AUGUST 1-5, 2018**

**2018 Asian Open Figure Skating Trophy**

**Bangkok, Thailand**

**August 1 - 5, 2018**

**ANNOUNCEMENT**





# Asian Skating Union

## 2018 Asian Open Figure Skating Trophy

An International Senior, Junior and Novice Competition

for

Men, Ladies, Pairs and Ice Dance

organized by

**Figure & Speed Skating Association of Thailand**



**Bangkok, Thailand**

**August 1-5, 2018**

Senior competition as part of the



**INTERNATIONAL  
SKATING UNION**

**ISU Challenger Series in Figure Skating 2018/19**

under the authorization of the

**INTERNATIONAL SKATING UNION**



## **1. GENERAL REGULATIONS**

The 2018 Asian Open Figure Skating Trophy will be conducted in accordance with the ISU Constitution and General Regulations 2018, the Special Regulations & Technical Rules Single & Pair Skating and Ice Dance 2018, ISU Communication No. 2172 (Guidelines for International Novice Competitions), and the relevant ISU Communications.

Participation in the 2018 Asian Open Figure Skating Trophy is open to all Competitors who belong to the ISU Member, and qualify with regard to eligibility according to Rule 102, provided their ages fall within the limits specified in Rule 108, paragraph 3 a) and they meet the participation, citizenship and residency requirements in Rule 109, paragraphs 1 through 5 and ISU Communication 2030 or any update of this Communication.

In accordance with Rule 109 of the ISU General Regulations and ISU Communication 2030 all Skaters who do not have the nationality of the ISU Member by which they have been entered or who, although having such nationality, have in the past represented another ISU Member, must produce an ISU Clearance Certificate. Passports of all Skaters, as well as the ISU Clearance Certificate, if applicable, must to be presented at the accreditation of the event for verification.

All competitors must be entered through their respective Member Federation.

## **2. ISU CHALLENGER SERIES IN FIGURE SKATING (Senior Category Only)**

The Senior Categories in 2018 Asian Open Figure Skating Trophy is part of the ISU Challenger Series in Figure Skating 2018/19 and will be conducted in accordance with additional requirements as specified in the General Announcement for the ISU Challenger Series in Figure Skating 2018/19 as well as ISU Communication 2151.

If the requirements specified in the above-mentioned documents are fulfilled the event will count towards ISU World Standing Points, Minimum Total Technical Score, ISU Challenger Series in Figure Skating Ranking and Prize Money.

There is a limitation for the Skaters/Couples to three (3) participations in the events of the ISU Challenger Series in Figure Skating. Participation in any of an ISU Junior Grand Prix of Figure Skating events or an ISU Grand Prix of Figure Skating events does not limit the participation in events of the ISU Challenger Series.

### **ISU CHALLENGER SERIES IN FIGURE SKATING RANKING AND PRIZE MONEY**

At the end of the ISU Challenger Series in Figure Skating, after the last event of the season has been concluded, the two highest final scores in the up to three different ISU Challenger Series in Figure Skating events of each competitor/couple will be added and taken into consideration to form an ISU Challenger Series in Figure Skating Ranking which will be published on the ISU website.

The top three placed Skaters/Couples of the annual ISU Challenger Series Ranking in Figure Skating after the last event of the ISU Challenger Series in Figure Skating will receive ISU Prize Money as outlined in the General Announcement for the ISU Challenger Series in Figure Skating 2018/19 as well as ISU Communication 2151.



### 3. TECHNICAL DATA

<b>PLACE</b>	<b>Main arena: Imperial World Ice Skating [IWIS]</b> 5th floor Imperial World Samrong, 999/1 Sukumvit Road, Samrong Nua, Amphur Muang, Samutprakarn, Bangkok 10270 (BTS station: Samrong) (an indoor ice-rink with the ice surface of 30 x 60 m, air-conditioned and heated)	
<b>MEN</b> <b>(Challenger Series)</b>	Short Program	The required elements to be skated are those listed in ISU Technical Rules Single & Pair Skating 2018, Rule 611, paragraphs 1 and 2.  Duration: 2 min., 40 sec. +/- 10 sec.
	Free Skating	In accordance with ISU Technical Rules Single & Pair Skating 2018, Rule 612 and the respective ISU Communication. Special attention should be paid to the "well balanced program" and the element value.  Duration: 4 min. +/- 10 sec.
<b>LADIES</b> <b>(Challenger Series)</b>	Short Program	The required elements to be skated are those listed in ISU Technical Rules Single & Pair Skating 2018 Rule 611, paragraphs 1 and 2.  Duration: 2 min., 40 sec. +/- 10 sec.
	Free Skating	In accordance with ISU Technical Rules Single & Pair Skating 2018, Rule 612 and the respective ISU Communication. Special attention should be paid to the "well balanced program" and the element value.  Duration: 4 min., +/- 10 sec.
<b>PAIR SKATING</b> <b>(Challenger Series)</b>	Short Program	The required elements to be skated are those listed in ISU Technical Rules Single & Pair Skating 2018, Rule 620, paragraphs 1 and 2 for 2018/19.  Duration: Duration: 2 min., 40 sec. +/- 10 sec.
	Free Skating	In accordance with ISU Technical Rules Figure Skating & Pairs Skating 2018, Rule 621 and the respective ISU Communication. Special attention should be paid to the "well balanced program" and the element value.  Duration: 4 min. +/- 10 sec.
<b>ICE DANCE</b> <b>(Challenger Series)</b>	Rhythm Dance	In accordance with ISU Technical Rules Ice Dance 2018, Rule 709.  Rhythms, required elements and guidelines are those listed in ISU Communications 2148, 2164 and subsequent updates.  Duration: 2 min., 50 sec., +/- 10 sec
	Free Dance	In accordance with ISU Technical Rules Ice Dance 2018, Rule 710. The required elements to be skated are those listed in ISU Communication 2148, 2164 and subsequent updates.  Duration: 4 min., +/- 10 sec.



<b>JUNIOR MEN</b>	Short Program	The required elements to be skated are those listed in ISU Technical Rules Single & Pair Skating 2018, Rule 611, 2018/19.  Duration: 2 min., 40 sec. +/- 10 sec.
	Free Skating	In accordance with ISU Technical Rules Single & Pair Skating 2018, Rule 612 and the respective ISU Communication. Special attention should be paid to the “well balanced program” and the element value.  Duration: 3 min., 30 sec. +/- 10 sec.
<b>JUNIOR LADIES</b>	Short Program	The required elements to be skated are those listed in ISU Technical Rules Single & Pair Skating 2018 Rule 611, 2018/19.  Duration: 2 min., 40 sec. +/- 10 sec.
	Free Skating	In accordance with ISU Technical Rules Single & Pair Skating 2018, Rule 612 and the respective ISU Communication. Special attention should be paid to the “well balanced program” and the element value.  Duration: 3 min., 30 sec. +/- 10 sec.
<b>ADVANCED NOVICE BOYS</b>	Short Program	The required elements to be skated are those listed in ISU Communication 2172.  Duration: 2 min., 20 sec. +/- 10 sec.
	Free Skating	In accordance with ISU Communication 2172 and the respective ISU Communication. Special attention should be paid to the “well balanced program” and the element value.  Duration: 3 min. +/- 10 sec.
<b>ADVANCED NOVICE GIRLS</b>	Short Program	The required elements to be skated are those listed in ISU Communication 2172.  Duration: 2 min., 20 sec. +/- 10 sec.
	Free Skating	In accordance with ISU Communication 2172 and the respective ISU Communication. Special attention should be paid to the “well balanced program” and the element value.  Duration: 3 min., +/- 10 sec.
<b>INTERMEDIATE NOVICE BOYS AND GIRLS</b>	Free Skating	The required elements to be skated are those listed in ISU Communication 2172.  Duration: 3 min. +/- 10 sec.
<b>BASIC NOVICE BOYS AND GIRLS</b>	Free Skating	The required elements to be skated are those listed in ISU Communication 2172.  Duration: 2 min., 30 sec. +/- 10 sec.



## 4. ENTRIES

### 4.1 General

All Senior Entries must be made by the Member concerned based on the regulations for the ISU Challenger Series in Figure Skating 2018/19.

All entries for the 2018 Asian Open Figure Skating Trophy, must be done through the **ISU Online Registration System (ORS)** by the deadline indicated. Hotel and travel information should also be entered into ORS, as well as bank information. Declarations will need to be uploaded to the ORS as well.

### 4.2 Preliminary Entries (For Senior Category Only)

The preliminary entries must reach the Organizer by latest: **Friday, July 12, 2018** by entering the information through ORS.

### 4.3 Entries by Name

#### 4.3.1 Entries of Competitors (For Senior Category Only)

The Entries by names must be made via the ISU Online Registration System (ORS):

<https://fms.sportresult.com/isu>

and will be submitted via the ORS simultaneously to the:

**Figure and Speed Skating Association of Thailand**  
286 Ramkhamheang Rd, Huamark,  
Bangkapi, Bangkok, 10240, Thailand  
tel / fax: +66 2 186 7555  
e-mail: [fsat@windowslive.com](mailto:fsat@windowslive.com)

and to:

ISU Secretariat  
fax: +41 21 612 66 77  
e-mail: [entries@isu.ch](mailto:entries@isu.ch)

not later than: **Friday, July 20, 2018 – 20:00 h (Local time Bangkok)**

#### 4.3.2 Entries of Competitors (Basic Novice, Intermediate Novice, Advance Novice and Junior)

All ISU member and are eligible to nominate **2** competitors per category. Applications are accepted through ISU member federation.

The names of competitors with copy of their passports. The form must be received by the Organizing Committee and the Secretariat office of the 2018 Asian Open Figure Skating Trophy not later than **Friday, July 20, 2018 – 20.00 h (Local time Bangkok)**

Applications submitted to the:

**Figure and Speed Skating Association of Thailand**  
286 Ramkhamheang Rd, Huamark,  
Bangkapi, Bangkok, 10240, Thailand  
tel / fax: +66 2 186 7555  
e-mail: [fsat@windowslive.com](mailto:fsat@windowslive.com)



### 4.3.3 Entries of Judges

Each participating ISU Member has the right to nominate one (1) judge who has at least the qualification "Judge for International Competitions".

In case of too many nominated judges the organizer will draw the panel of judges immediately after the closing date for the entries. The result of such draw will be communicated to all ISU Members involved in writing immediately after the conclusion of such draw.

The Entries of Judges must be made via the ISU Online Registration System (ORS) not later than: **Friday, July 20, 2018 – 20:00 h (Local time Bangkok)**

Each panel of Judges in Senior Categories will consist of at least 7 Judges. In exceptional cases and if there is no possibility to compose a panel of judges with at least 7 Judges, the ISU Vice-President Figure Skating may exceptionally authorize the panel in question to have a minimum of 6 Judges.

In case that at the time of the competition more Judges will be available and entered as required to compose the panels of Judges in one or more disciplines, the Organizing Member in consultation with the ISU will conduct on site, a draw for the panel of judges in the discipline in question for the first segment. The Judges, not drawn for the first segment will be seated for the second segment.

The panel for the second segment (Free Skating / Free Dance) will in this case be completed by an open draw amongst the Judges serving in the first segment of the discipline in question.

### 4.3.4 Entries of Team Members

Official entries of Team Leaders, Assistant Team Leaders, Team Officials, Team Medical Staff and Coaches and the partner or relative of a Judge will be accepted. Accreditation will be provided to those who are officially accepted by the Organizer.

Please be advised that only one Coach per Skater will be accredited. An Assistant Team Leader will be accepted for Teams having six (6) and more Skaters. Only two Team Officials of each Member, including the Member President provided that they are Council Members, Technical Committee Members or Members of the Head Office of their Federation, will be accredited. Not more than one (1) Team Doctor and one (1) Team Physiotherapist will be accepted as the Team Medical Staff, for which the organizer requests the right to have a medical certification (document) presented before accreditation. An accompanying person to a Judge will only be accepted for accreditation if this person is a partner in life or a relative of the Judge. The Member Federations guarantee that the requested accreditation of Team Members will correspond to their function within the team and the Federation.

The names of all team members must be submitted via the ISU Online Registration System (ORS) and must reach the Organizing Committee and the ISU Secretariat not later than: **Friday, July 20, 2018– 20:00 h (Local time Bangkok)**

### 4.1.5 Entry Fee

With the entry to the competition, the entry fee must be paid as follows:

\$ 70.00 USD per single skater (only for Senior, according to the ISU Communication 2151)

\$100.00 USD per pair or ice dance couple (only for Senior, according to the ISU Communication 2151)

\$100.00 USD per single skater (Basic Novice, Intermediate Novice, Advance Novice and Junior)

**The entry fee will not be refunded in case of withdrawals for any reason.**

Entry fees are required at time of final entries (no later than **Friday July 20, 2018**) and may be paid using a Bank Transfer to:

Beneficiary name: Figure & Speed Skating Association of Thailand  
Account No.: 981-8-08441-1  
Beneficiary Address: 286 Ramkhamhaeng Road, Huamark, Bangkok, Bangkok 10240 Thailand  
Bank Institution: Krungthai Bank, Thailand  
Branch of Bank: Sport Authority of Thailand (Huamark) Branch  
Bank Address: 286 Ramkhamhaeng Road, Huamark, Bangkok, Bangkok 10240 Thailand  
Swift Code: KRTHTHBK



## 5. APPOINTED EVENT OFFICIAL FOR SENIOR CATEGORIES

This ISU Challenger Series in Figure Skating event will follow the requirements of the General Announcement for the ISU Challenger Series in Figure Skating 2018/19 as well as ISU Communication 2151 and principles of Rule 420, paragraph 5.a) of the ISU Special Regulations Single & Pair Skating and Ice Dance 2018 for appointing the event officials.

The members of each individual Technical Panel (Technical Controller and the Technical Specialists) will not be from the same ISU Member. At least two (2) Technical Panel members will have the qualification "ISU", however one of the three members may have the qualification "International".

The Referee will have at least the qualification "International" and could be of the same ISU Member as one member of the Technical Panel (Technical Controller and Technical Specialists).

The Data Operator and the Replay Operator will have at least the qualification "International".

## 6. MEALS, LODGING and TRAVEL EXPENSES

The organizer will provide and cover the expenses for rooms and meals for all Referees, the Technical Controllers, the Technical Specialists, the Data and Replay Operators and Judges participating in Senior Categories, beginning with dinner on **Thursday, August 2, 2018** until breakfast on **Monday, August 6, 2018**. For the Event Officials and Judges who also serve in Junior and/or Novice categories, the organizer covering period beginning with dinner on **Tuesday, July 31, 2018**.

Should any of the above mentioned persons arrive at the hotel before or stay longer than the period described above, their room costs and expenses will be the responsibility of the individual and must be paid on arrival.

The Organizing Committee will cover the costs for travel expenses for all Referees, the Technical Controllers, the Technical Specialists, the Data and Replay Operators.

In accordance with the General Announcement for the ISU Challenger Series in Figure Skating 2018/19 as well as ISU Communication 2151, all Referees, the Technical Controllers, the Technical Specialist, the Data and Replay Operators and Judges officiating in the "senior" competitions of an ISU Challenger Series in Figure Skating event will, at the expense of the organizing ISU Member, receive pocket money of CHF 200.00 or the equivalent in the local currency. Any Official officiating besides in the "senior" category also in another category (for example junior), will at the expense of the organizing ISU Member receive an additional amount of CHF 100 (or equivalent in another currency) of pocket money per additional day of service.

## 7. PRACTICE

Official practice for **Junior and Novice Competitors** begins on **Wednesday August 1, 2018**.

Official practice for **Senior Competitors** begins on **Friday August 3, 2018**.

The detailed schedule will be issued at the time of registration.

## 8. MUSIC / PLANNED PROGRAM CONTENT

All Competitors shall furnish competition music of excellent quality on CD in any other approved format, in accordance with Rule 343, paragraph 2. A list of titles, composers and orchestras of the music to be used for the Short Program and Free Skating Program for Single and Pairs, for the Rhythm and Free Dance Program for Ice Dance must be listed for each Competitor on the official Music Selection Form and attached to the official Entry Form for Competitors.

In accordance with Rule 343, paragraph 2, all covers/discs must show the Competition event, Competitor's name, the Nation and the exact running time of the music (not skating time) including any starting signal and must be submitted at the time of registration. Each program (Short Program, Free Skating, Rhythm Dance, Free Dance) must be recorded on a separate disc. In addition competitors/couples must provide a back-up drive for each program.





If music information is not complete and/or the music is not provided, accreditation will not be given.

With the entry forms, the "Program Content Sheet" must be returned to the Organizing Committee in time. It is mandatory that the Program Content Sheet be filled in precisely by each Skater/team in English using the terminology for the elements listed in the respective ISU Communication

## 9. ARRIVAL OF PARTICIPANTS / TEAMS

The nearest airport to Bangkok, Thailand, is the Suvarnabhumi Airport (Bangkok) with a distance of approximately 25 km to the official hotel.

The Organizing Committee will provide ground transportation services for all Referees, the Technical Panel (Technical Controller, Technical Specialists, Data & Replay Operators) and Judges. These officials are requested to announce to the Organizing Committee as soon as possible but no later than **Friday, July 20, 2018** the name of the airlines, flight numbers, dates and times of arrival or any other information concerning transportation and arrivals. The detailed information need to be submitted via the ISU Online Registration System (ORS).

## 10. OFFICIAL HOTEL(S)

### Brighton Hotel & Residence

222 Sampawut Road, Bangna, Bangkok, 10260

tel: +66 2 393 3999

fax: +66 2 393 8228

website: [www.brightonbangkok.com](http://www.brightonbangkok.com)

Room rates (Including Tax & Breakfast)

- Deluxe Room (Single/Twins): US\$ 70/ room / night
- Junior Suite Room (Single/Twins): US\$ 85/ room / night
- Executive Suite (two bedroom-one living room): US\$ 170/ room / night

and

### Jasmine Resort Hotel

1511 Sukhumvit 67-69,Prakhanong-nue,Wattana Bangkok 10110

tel: +66 2 335 5000

fax: +66 2 335 5050

website: [www.jasmineresortbangkok.com](http://www.jasmineresortbangkok.com)

Room rates (Including Tax & Breakfast)

- Deluxe Room (Single): US\$ 90/ room / night
- Deluxe Room (Twin): US\$ 100/ room / night
- Triple Deluxe Room: US\$ 135/ room / night

Hotel capacities can only be booked via the Organizing Committee. Booking requests have to be sent to the organizer by latest **Friday, July 20, 2018**. The organizer cannot guarantee the availability of rooms, for bookings which are received after that date. All payments shall be made upon arrival at the hotel.

Payment: Cash or Credit card.

## 11. ACCREDITATION

The official accreditation for Teams is planned at Rink.

Accreditation as a Team Member will be given to all entered Judges, Competitors and one Team Leader per participating team, one Coach per Competitor, a maximum of two Team Officials of ISU Members (including the Member President), provided that they are Council Members, Technical Committee Members or Members of the Head Office of their Federation and a maximum of two medical persons. Accreditation will only be granted to persons in those various functions if officially entered and named through their ISU



Member. **The ISU Member certifies with the signed entry form the indicated functions within the team of all team members. Any misuse of any function will be sanctioned by the ISU/OC.**

Accreditation will be given to appointed Event Officials and Guests.

Chaperones will not receive accreditation. The Team Leader may request "bus permits" for the official registered Chaperones to join the official transportation system of the Organizing Committee.

## 12. RESULTS

The marking system (ISU Judging System) as described in ISU Technical Rule Single & Pair Skating 2018, Rule 352 and Rule 353 (Determination and publication of results) will be used.

## 13. PRESENTATION OF MEDALS AND PRIZES

The three best placed Skaters/Couples in each event will be announced and honored. Gold, silver and bronze medals will be presented to the medalists. The national anthem of the winner will be played and the flags of the medal winners hoisted.

## 14. INSURANCE / LIABILITY

In accordance with Rule 119, it is the sole obligation of each Member participating in ISU Events, to provide medical and accident insurance for their athletes, officials and all other members of the Member's team. Such insurance must assure full medical attendance and also the return of the ill or injured person to the home country by air transport or by other expeditious. It is an internal matter of each ISU Member to decide the issue who shall pay the premium for such insurance.

The ISU assumes no responsibility for or liability with respect to bodily or personal injury or property damage incurred in connection incurred by Competitors and Officials.

## 15. EXHIBITION

No exhibition will be held at this competition.

## 16. MEETINGS FOR ISU EVENT OFFICIALS and JUDGES

All Referees, Technical Controllers, Technical Specialists, Data and Replay Operators and Judges are responsible to make their travel arrangements in order to be able to attend the respective event related meetings. If any other party makes the flight arrangements, the Referees, Technical Controllers, Technical Specialists, Data and Replay Operators and the Judges are responsible to check if such arrangements are in line with the detailed schedule as mentioned under paragraph 18.

## 17. INFORMATION AND VARIOUS

For information, please contact the Organizing Committee:

**Figure and Speed Skating Association of Thailand**

286 Ramkhamheang Rd, Huamark,  
Bangkapi, Bangkok, 10240, Thailand

tel / fax: +66 2 186 7555

e-mail: [fsat@windowlive.com](mailto:fsat@windowlive.com)



## 18. EVENT SCHEDULE

Tuesday July 31, 2018	All day	<b>Arrival of <u>Junior and Novice Competitors</u></b>
Wednesday, August 1, 2018	06:00	Official practice for Junior and Novice
	08:00	Junior and Novice Team Leaders Meeting
	10:00	Junior and Novice Referees, Technical Controllers and Technical Panel Meeting
	11:00	Junior and Novice Initial Judges Meeting
	13:00	INTERMEDIATE NOVICE GIRLS – Free Skating
		BASIC NOVICE GIRLS – Free Skating
		Victory Ceremonies
		ADVANCED NOVICE GIRLS – Short Program
		ADVANCED NOVICE BOYS – Short Program
	Thursday, August 2, 2018	All day
06:00		Official practice for Junior and Novice
11:00		INTERMEDIATE NOVICE BOYS – Free Skating
		BASIC NOVICE BOYS – Free Skating
		ADVANCED NOVICE GIRLS – Free Skating
		ADVANCED NOVICE BOYS – Free Skating
		Victory Ceremonies
		JUNIOR LADIES – Short Program
		JUNIOR MEN – Short Program
		Victory Ceremonies
Friday, August 3, 2018	All Day	Official practice for <b>Senior</b> and Junior
	10:00	<b>Senior</b> Team Leaders Meeting
	14:00	JUNIOR LADIES – Free Skating
		JUNIOR MEN – Free Skating
		Victory Ceremonies
	TBA	Junior and Novice Technical Panel Review
	TBA	Junior and Novice Round Table Discussion
	TBA	<b>Senior</b> Individual Technical Panel Meetings per Discipline
	19:00	<b>Senior</b> Referees and Technical Controllers Meeting
	19:30	<b>Senior</b> Initial Judges Meeting
Saturday, August 4, 2018	Morning	Official Practice for Senior
	14:30	<b>SENIOR</b> ICE DANCE – Rhythm Dance
		<b>SENIOR</b> PAIRS – Short Program
	<b>SENIOR</b> LADIES – Short Program	
	<b>SENIOR</b> MEN – Short Program	



---

Sunday, August 5, 2018	Morning	Official Practice for <b>Senior</b>
	13:30	<b>SENIOR ICE DANCE</b> – Free Dance
		<b>SENIOR PAIRS</b> – Free Skating
		<b>SENIOR LADIES</b> – Free Skating
		<b>SENIOR MENS</b> – Free Skating
		Victory Ceremonies
	TBA	<b>Senior</b> Technical Panel Review per Discipline
	TBA	<b>Senior</b> Round Table Discussion for Judges per Discipline
Monday August 6, 2018	All day	Departure of teams

**Please note:**

**This schedule is subject to changes and will be updated in accordance with the final number of entries.**



## FORMS AND DEADLINES

Number	Form	Format	Deadline
N/A	Preliminary Entry Form	ORS	July 12, 2018
N/A	Composition of Delegation	ORS	July 20, 2018
N/A	Entry Form for Competitors	ORS	July 20, 2018
N/A	Entry Form for Judges	ORS	July 20, 2018
N/A	Hotel reservation request	ORS	July 20, 2018
N/A	Team Travel Form	ORS	July 20, 2018
Form 1	Visa request form	Form	As soon as possible
Form 2	Press Information	Form	July 20, 2018
Form 3	Competition Music Information	Form	July 20, 2018
Form 4	Ice Dance Music Information	Form	July 20, 2018
Form 5	Program Content Form	Form	July 20, 2018
Form 6	Skater Heal Care	Form	July 20, 2018